

PRO-FACE OPERATOR INTERFACES

PRODUCT DATA SHEET



AGP3500-S1-AF-D81K
AGP3500-S1-AF-D81
AGP3500-S1-D24-D81K
AGP3500-S1-D24-D81C

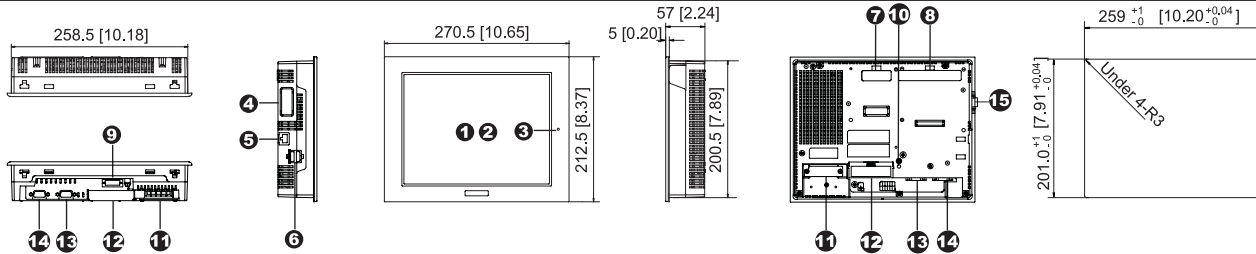


AGP3500S D81K/D81C Integrated HMI Controller

10.4" Integrated Control Operator Interface with Built-In Discrete I/O

- All-in-One HMI and PLC with Built-in 6 discrete inputs and 2 discrete outputs
- 65,536 Colors, Clear, Bright, High-Resolution STN Display
- 64-bit RISC 266Mhz CPU for Ultra Fast Screen Refresh and Data Sampling
- No Grid Analog Touch Panel for Improved Visibility and Precise Part Placement
- Supports Up to Four Protocol Drivers Simultaneously
- High Speed Application Transfer, 10 Times Faster than Conventional Operator Interfaces
- 10/100 Base-T Ethernet, USB, Serial (MPI) and CompactFlash™ Communication Interfaces
- Audio Output, Alarm, Buzzer Remote Reset Interfaces
- Video Camera Support using Optional GP2000-VM41 Video Mix Module

PRODUCT OVERVIEW



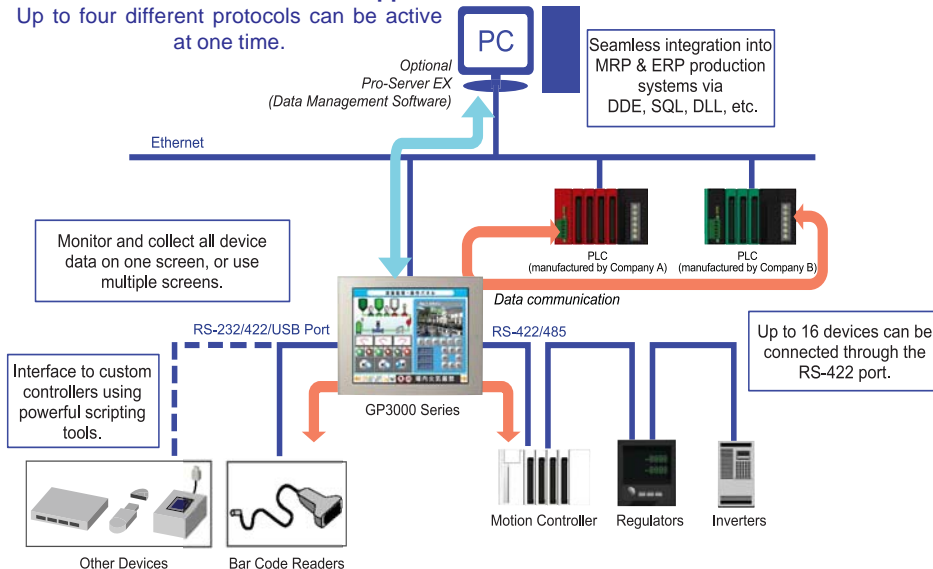
AGP-3500T (AC Type) Unit Shown.

- | | | |
|--------------------------------------------------------------------------------------------------------------------------------------------------------------------------------------------------------------------------------------------------------------------------------------------------------------------------------------------------------------------------------------------------------------------------|-----------------------------------------------------------------------------------------------------------------------------------------------------------------------------------------------------------------------------------------------------------------------------------------------------------------------------------------------------------------------------------------------------------------------------------------------------------------------------------------------------------------------------------------------------------------------------------|------------------------------------------------------------------------------------------------------------------------------------------------------------------------------------------------------------------------------------------------------------------------------------------------------------------------------------------------------------------------------------------------------------------------------------------------------------------------------------------------------------------------------------------------------------------------------------------------------------------------------------------------------------------------------------------|
| <p>1 Display</p> <p>2 Touch Panel</p> <p>3 Status LED</p> <p>4 Expansion Communication Feature Interface 1</p> <p>5 10/100 Base-T Ethernet Interface (LAN) (RJ45)</p> <p>6 USB Interface (Host)
 Conforms to USB1.1. (TYPE-A conn.) 2 ports for data transfer cable, USB-compatible printer, or barcode reader, etc. The maximum communication distance is 5m.</p> | <p>7 Optional Communication Module Interface 2</p> <p>8 Optional Video Mix Module Interface
 Support for optional GP2000-VM41 4-Channel video camera input and RGB remote monitor output.*1</p> <p>9 Auxiliary input/output /Audio Output Interface (AUX)
 This interface is External Reset, Alarm Output, Buzzer Output, and sound output.</p> <p>10 CF Card Access LED
 This lamp will light when CF card is inserted and CF card cover is closed, or while accessing the CF card when the cover is opened.</p> | <p>11 Power Input Terminal Block
 Connect the power cable.</p> <p>12 CF Card Cover
 The CF Card I/F and Dip Switches are located behind the access door. This cover must be closed when reading and writing to the CF Card.</p> <p>13 Serial Interface (COM1)
 RS-232C/RS-422 serial interface. D-sub 9-pin plug type connector. Communication method is switched via software.</p> <p>14 Serial Interface (COM2)
 RS-422/RS-485 (MPI 187kbps) serial interface. D-sub 9-pin socket type connector.</p> <p>15 Discrete I/O Interface
 6 Discrete Inputs, 2 Discrete Outputs Built-in.</p> |
|--------------------------------------------------------------------------------------------------------------------------------------------------------------------------------------------------------------------------------------------------------------------------------------------------------------------------------------------------------------------------------------------------------------------------|-----------------------------------------------------------------------------------------------------------------------------------------------------------------------------------------------------------------------------------------------------------------------------------------------------------------------------------------------------------------------------------------------------------------------------------------------------------------------------------------------------------------------------------------------------------------------------------|------------------------------------------------------------------------------------------------------------------------------------------------------------------------------------------------------------------------------------------------------------------------------------------------------------------------------------------------------------------------------------------------------------------------------------------------------------------------------------------------------------------------------------------------------------------------------------------------------------------------------------------------------------------------------------------|

COMMUNICATION CAPABILITY

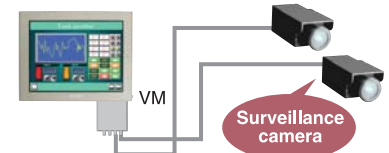
Simultaneous Multi-Protocol Support

Up to four different protocols can be active at one time.



Remote Video Monitoring

Add up to four additional cameras using optional GP2000-VM41 Video Mix Unit



Video images provide virtual on-site monitoring of line conditions.

Applications

- Inline Process Monitoring
- Machine Safety
- Security



AGP3500S D81K/D81C CONTINUED

INTEGRATED MONITOR CONTROL

ONLINE LOGIC PROGRAM MONITORING FEATURE

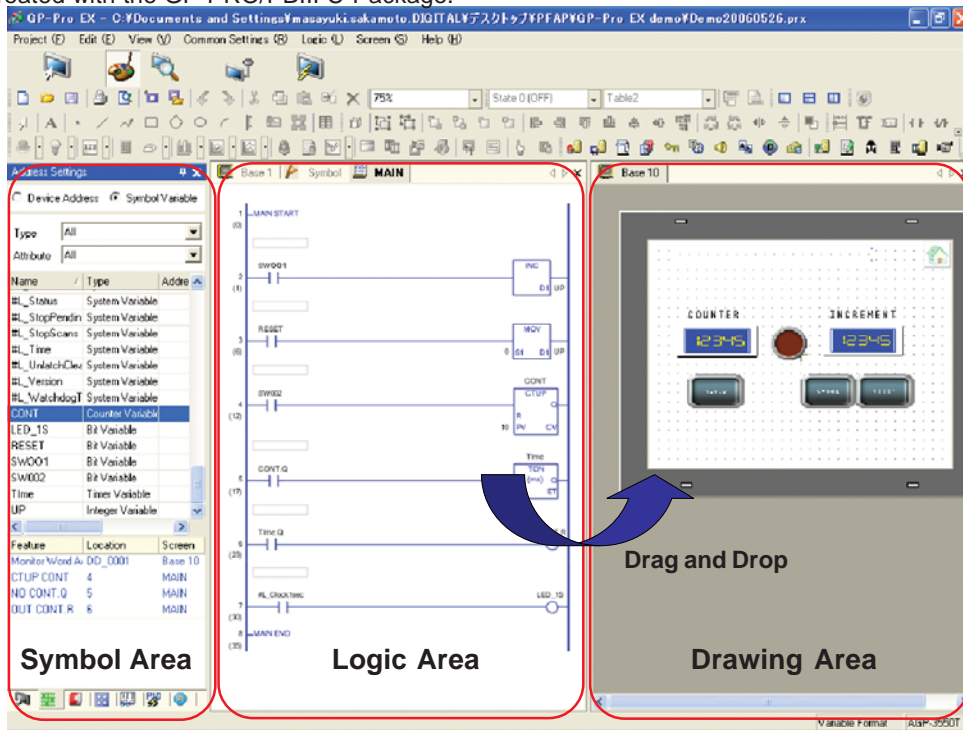


Detect Problems Faster

- View logic Programming on HMI while running. "No need for a laptop!"
- Verify current values of all variables live
- Quickly identify sequential logic faults
- Helps optimize Programming & Processes
- View logic in English or Japanese

POWERFUL LOGIC PROGRAMMING

With GP-Pro EX, you can develop logic programs as well as screen creation. You can also import existing logic programs created with the GP-PRO/PBIII C-Package.



Time Saving Steps

Drag and Drop

Drag contact or coil to quickly create a graphical switch or lamp.

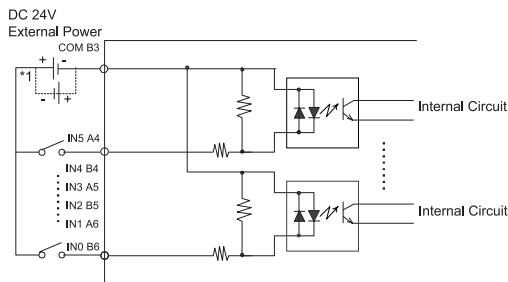
Re-usable sub-routines

Reduce steps for product programming development and maintenance using sub-routines.

Screen Editor
GP-Pro EX

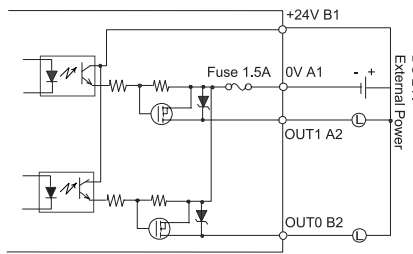
BUILT-IN DISCRETE I/O

6 Discrete Inputs, 2 Discrete Outputs Per Model

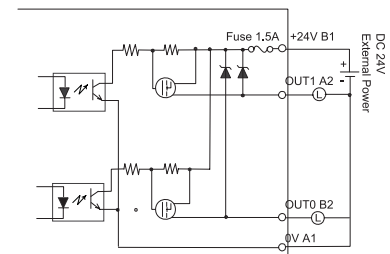


*1 Dotted line shows connection to sink output type.

Discrete Input Connection



Discrete Output Connection (Sink Configuration)



Discrete Output Connection (Source Configuration)

AGP3500S D81K/D81C SPECIFICATIONS

FUNCTIONAL SPECIFICATIONS

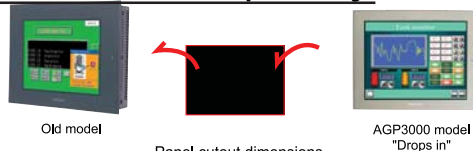
Model		AGP3500-S1-AF-D81K/D81C	AGP3500-S1-D24-D81K/D81C
Display	Type	STN Color LCD	
	Colors	65536 colors (no blink) / 16384 colors (3-speed blink)	
	Backlight	User replaceable CCFL (Service life: 50,000 hrs. or more at 25°C (77°F) and 24 hrs. operation)	
	Resolution	640 x 480 pixels	
	Brightness Control	8 levels of adjustment available via touch panel	
Memory	Touch Panel	Resistive film analog 1024 x 1024 resolution	
	Application	8MB FEPRAM	
	Data Backup	320KB SRAM	
Interfaces	Serial (COM 1) Interface	RS-232C/422/485 configurable, 9 pin D-sub plug, Data Transmission Speed: 2400 to 115.2 kbps	
	Serial (COM 2) Interface	RS-422/485, 9 pin D-sub socket, Data Transmission Speed: 2400 to 115.2 kbps (MPI Direct 187.5 kbps)	
	Ethernet Interface	Ethernet IEEE802.3, 10BASE-T/100BASE-TX, modular jack connector (RJ-45)	
	Expansion Unit Interface	Interface port for future field networking solutions	
	USB Interface	2 ports USB1.1, USB TYPE-A connector	
	CF Card Interface	1 slot CompactFlash™, TYPE II	
	Sound Output	Speaker output 70mW (Rated Load: 8ohm, Frequency: 1kHz)	
	Video Mix Interface	Support for optional GP2000-VM41 4-Channel Video camera input and RGB remote monitor with output.	
	Discrete 6 In 2 Out Interface	Connect to an I/O device. 6 Input points 24VDC, Rated: 5.7 mA. 2 Outputs 24V DC, Rated: DC 20.4V to 28.8V.	
AUX Input/Output	AUX Discrete Output: Alarm Output, RUN Output, Buzzer Output, Rated: DC24V @ 50mA AUX Discrete Input: Remote Reset Input, Rated: DC24V @ 6mA Operating Voltage: ON State: DC9V or greater, OFF State: DC2.5V or less		

GENERAL SPECIFICATIONS

Electrical	Rated Voltage	100V AC to 240V AC	24V DC
	Rated Voltage Range	85V AC to 265V AC	19.2V DC to 28.8V DC
	Power Consumption	100V AC 0.9A or less, 240V AC 0.45A or less	50W or less
Environmental	Ambient Operating Temp.	0°C (32°F) to 50°C (122°F)	
	Storage Temperature	-20°C (-4°F) to 60°C (140°F)	
	Humidity	10%RH to 90%RH (non-condensing, wet bulb temperature: 39°C (102°F) or less)	
	Altitude Operation	800hPa to 1114hPa (2000 meters or lower)	
	Vibration & Shock Resistance	IEC61131-2 compliant. 5Hz to 9Hz single amplitude 3.5mm, 9Hz to 150Hz fixed acceleration 9.8m/s ² , X, Y, Z directions for 10 times (100min.)	
Structural	Ratings	Equivalent to IP65f, Nema #250 Type 4x/13 (Equivalent to NEMA 12 with the addition of "Oil or Coolant Spraying and Splashing")	
	Certifications	CE, UL, cUL recognized (CI 1 Div 2)	CE, UL Listed CI 1 Div 2
	External Dimensions	W270.5mm [10.65in.] x H212.5mm [8.37in.] x D57mm [2.24in.]	
	Weight	2.5kg (5.5lb) or less	

CUTOUT COMPATIBILITY

16 Years of Cut-Out Compatibility



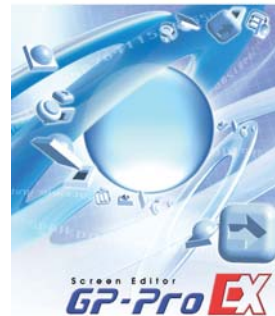
Panel cutout dimensions

Series name	Size	301.5x227.5 mm	259x201 mm
GP77R Series	GP577R Series	GP477R EL	
GP2000 Series	GP2600/01 Series GP2500/01 Series	—	
GP3000 Series	GP-3600 Series GP-3500 Series (STN or Mono)	GP-3500* Series (TFT)	

*Note: Drop-in replacement for GP477R EL Model.
To mount in a GP2500 cut-out, an adapter plate is required.



SOFTWARE COMPATIBILITY



POWERED BY:

Screen Editor
GP-Pro EX

HMI Development
Software

ORDERING INFORMATION

ORDER NUMBER

AGP3500-S1-AF-D81K
AGP3500-S1-AF-D81C
AGP3500-S1-D24-D81K
AGP3500-S1-D24-D81C

DESCRIPTION

10.4" STN, 2 Serial, 2 USB, Ethernet, 6 In 2 Out (Sink), 100-240AC
10.4" STN, 2 Serial, 2 USB, Ethernet, 6 In 2 Out (Source), 100-240AC
10.4" STN, 2 Serial, 2 USB, Ethernet, 6 In 2 Out (Sink), 24VDC
10.4" STN, 2 Serial, 2 USB, Ethernet, 6 In 2 Out (Source), 100-240AC

OPTIONAL ACCESSORIES

HMI-CAB-ETH
CA3-USBCB-01
CA5-DFS10-01
CA4-ATM10-01
PLC Cables & Accessories

Ethernet Crossover Cable: HMI to PLC Ethernet port or to program HMI
USB download cable, PC USB port to AGP USB port
Overlay Screen Protection Sheets (5 sheets/pack)
Panel Adapter Plate for mounting AGP3500T in a GP2500 Cut-out
See AGP3000 Connectivity Document

Xycom Automation

Ph: 734-429-4971

Fax: 734-429-1010

<http://www.xycom.com>

Customer Support Hotline:

734-944-0482



© 2006 Xycom Automation, LLC. Specifications may change without notice.

Xycom Automation is a trademark of Xycom Automation. Other brand or product names are the property of their respective owners.