

PRO-FACE OPERATOR INTERFACES

PRODUCT DATASHEET



AGP3500-L1-D24-D81C

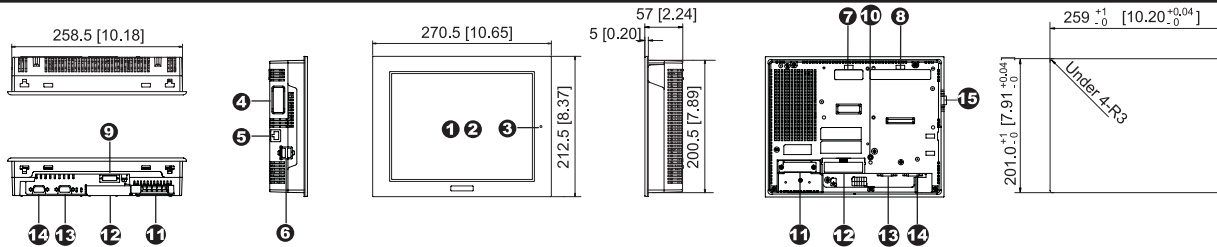


AGP3500L D81C Integrated HMI Controller

10.4" Integrated Control Operator Interface with Built-In Discrete I/O

- All-in-One HMI and PLC with Built-in 6 discrete inputs and 2 discrete outputs
- Crisp, Clear, Bright 320x240 Resolution Monochrome Display
- 64-bit RISC 133Mhz CPU for Ultra-Fast Screen Refresh and Data Sampling
- No Grid Analog Touch Panel for Improved Visibility and Precise Part Placement
- Supports Up to Two Protocol Drivers Simultaneously
- High Speed Application Transfer, 10 Times Faster than Conventional Operator Interfaces
- 10/100 Base-T Ethernet, USB, Serial (MPI) and CompactFlash™ Communication Interfaces
- High-Definition Part Images and Multi-Language Support

PRODUCT OVERVIEW



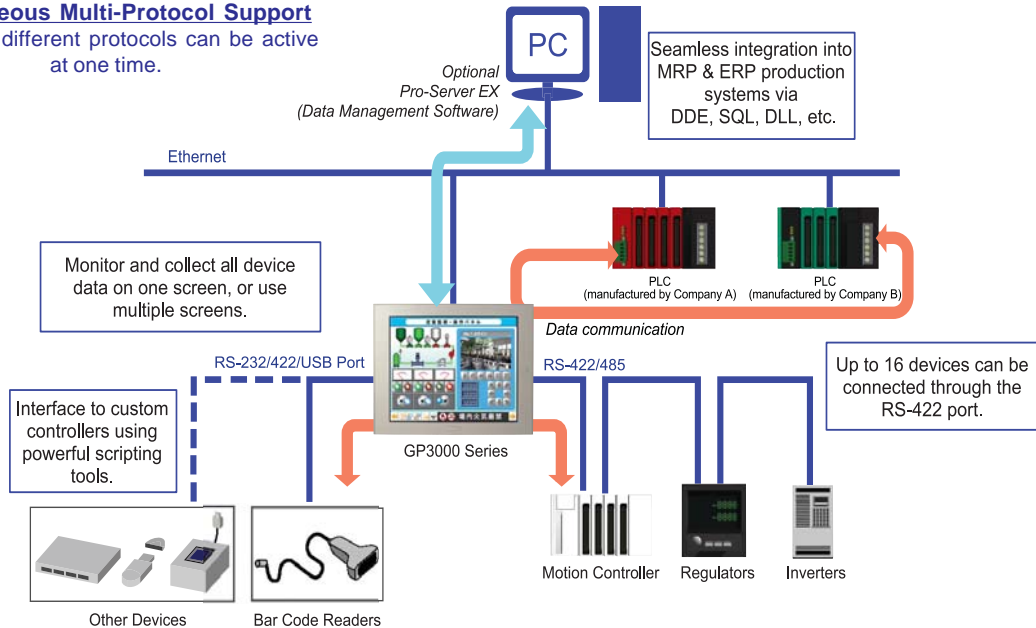
AGP-3500T (AC Type) Unit Shown.

- | | | |
|---|--|---|
| <p>1 Display</p> <p>2 Touch Panel</p> <p>3 Status LED</p> <p>4 Expansion Communication Feature Interface 1</p> <p>5 10/100 Base-T Ethernet Interface (LAN) (RJ45)</p> <p>6 USB Interface (Host)
Conforms to USB1.1. (TYPE-A conn.) 2 ports for data transfer cable, USB-compatible printer, or barcode reader, etc. The maximum communication distance is 5m.</p> | <p>7 Optional Communication Module Interface 2</p> <p>8 Optional Video Mix Module Interface
Support for optional GP2000-VM41 4-Channel video camera input and RGB remote monitor output.*1</p> <p>9 Auxiliary input/output /Audio Output Interface (AUX)
This interface is External Reset, Alarm Output, Buzzer Output, and sound output.</p> <p>10 CF Card Access LED
This lamp will light when CF card is inserted and CF card cover is closed, or while accessing the CF card when the cover is opened.</p> | <p>11 Power Input Terminal Block
Connect the power cable.</p> <p>12 CF Card Cover
The CF Card I/F and Dip Switches are located behind the access door. This cover must be closed when reading and writing to the CF Card.</p> <p>13 Serial Interface (COM1)
RS-232C/RS-422 serial interface. D-sub 9-pin plug type connector. Communication method is switched via software.</p> <p>14 Serial Interface (COM2)
RS-422/RS-485 (MPI 187kbps) serial interface. D-sub 9-pin socket type connector.</p> <p>15 Discrete I/O Interface
6 Discrete Inputs, 2 Discrete Outputs Built-in.</p> |
|---|--|---|

COMMUNICATION CAPABILITY

Simultaneous Multi-Protocol Support

Up to four different protocols can be active at one time.



AGP3500L D81C CONTINUED

INTEGRATED MONITOR CONTROL

ONLINE LOGIC PROGRAM MONITORING FEATURE

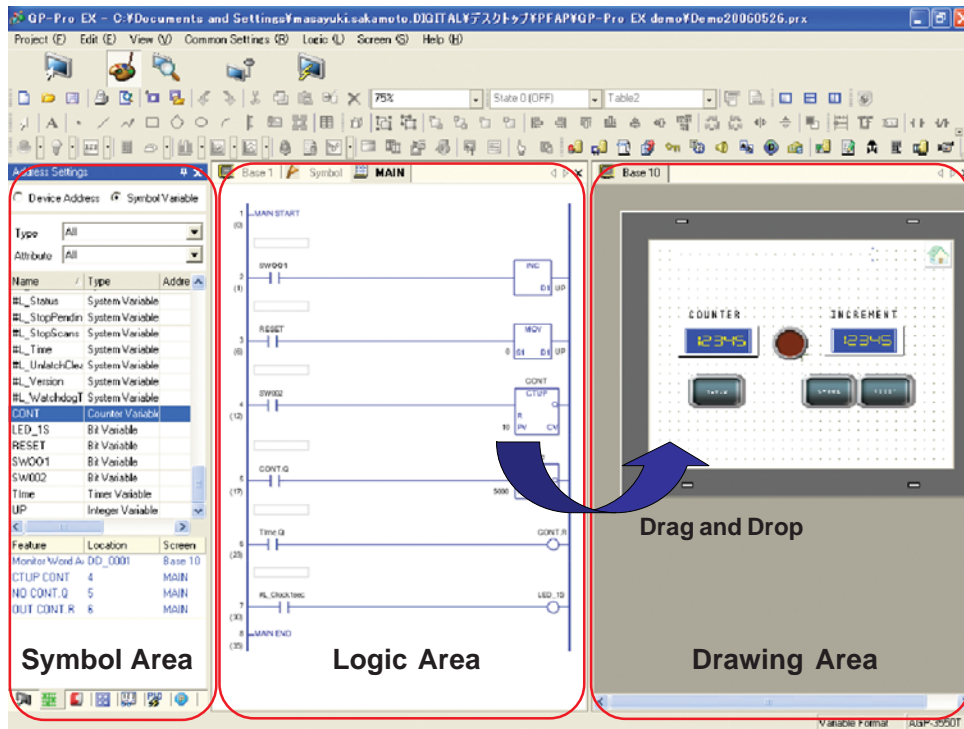


Detect Problems Faster

- View logic Programming on HMI while running. "No need for a laptop!"
- Verify current values of all variables live
- Quickly identify sequential logic faults
- Helps optimize Programming & Processes
- View logic in English or Japanese

POWERFUL LOGIC PROGRAMMING

With GP-Pro EX, you can develop logic programs as well as screen creation. You can also import existing logic programs created with the GP-PRO/PBIII C-Package.



Time Saving Steps

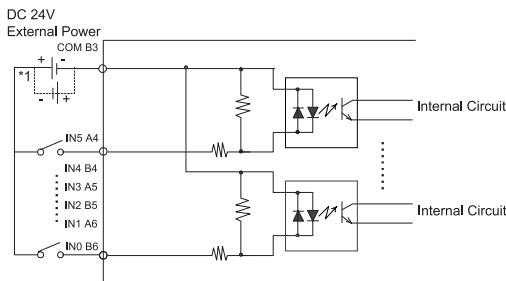
Drag and Drop
 Drag contact or coil to quickly create a graphical switch or lamp.

Re-usable sub-routines
 Reduce steps for product programming development and maintenance using sub-routines.



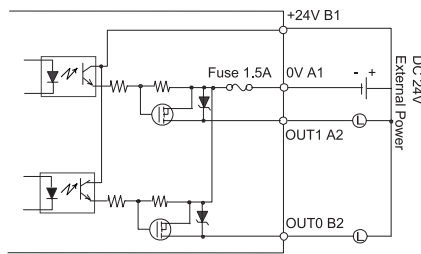
BUILT-IN DISCRETE I/O

6 Discrete Inputs, 2 Discrete Outputs Per Model

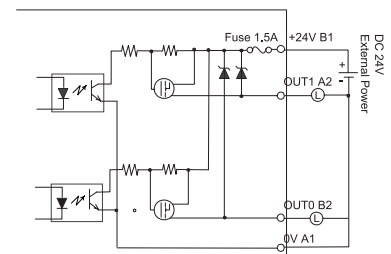


*1 Dotted line shows connection to sink output type.

Discrete Input Connection



Discrete Output Connection (Sink Configuration)



Discrete Output Connection (Source Configuration)

AGP3500L D81C SPECIFICATIONS

FUNCTIONAL SPECIFICATIONS

Model		AGP3500-L1-D24-D81C
Display	Type	Monochrome LCD
	Colors	Black and White (16 shades)
	Backlight	CCFL Service life: 58,000 hrs. or more at 25°C (77°F) and 24 hrs. operation
	Resolution	320 x 240 pixels
	Brightness & Contrast Controls	8 levels of adjustment available via touch panel
Memory	Touch Panel	Resistive film analog 1024 x 1024 resolution
	Application	6 MB FEPRAM
Interfaces	Data Backup	320KB SRAM
	Serial (COM 1) Interface	RS-232C/422/485 configurable, 9 pin D-sub plug, Data Transmission Speed: 2400 to 115.2 kbps
	Serial (COM 2) Interface	RS-422/485, 9 pin D-sub socket, Data Transmission Speed: 2400 to 115.2 kbps (MPI Direct 187.5 kbps)
	Ethernet Interface	Ethernet IEEE802.3, 10BASE-T/100BASE-TX, modular jack connector (RJ-45)
	USB Interface	1 Port USB1.1 Host I/F, USB TYPE-A connector
	Discrete 6 In 2 Out Interface	Connect to an I/O device. 6 Input points 24VDC, Rated: 5.7 mA. 2 Outputs 24V DC, Rated: DC 20.4V to 28.8V.
	CF Card Interface	1 slot CompactFlash™, TYPE II

GENERAL SPECIFICATIONS

Electrical	Rated Voltage	24V DC
	Rated Voltage Range	19.2V DC to 28.8V DC
	Power Consumption	26W or less
Environmental	Ambient Operating Temp.	0°C (32°F) to 50°C (122°F)
	Storage Temperature	-20°C (-4°F) to 60°C (140°F)
	Storage Humidity	10%RH to 90%RH (non-condensing, wet bulb temperature: 39°C (102°F) or less)
	Altitude Operation	800hPa to 1114hPa (2000 meters or lower)
Structural	Vibration & Shock Resistance	IEC61131-2 compliant. 5Hz to 9Hz single amplitude 3.5mm, 9Hz to 150Hz fixed acceleration 9.8m/s ² , X,Y, Z directions for 10 times (80min.)
	Ratings	Equivalent to IP65f, Nema #250 Type 4x/13 (Equivalent to NEMA 12 with the addition of "Oil or Coolant Spraying and Splashing")
	Certifications	CE, CSA, UL listed CI 1 Div 2
	External Dimensions	W167.4mm[6.59in.] x H135mm [5.31in.] x D59.5mm [2.34in.]
	Weight	1.0kg (2.2lb) or less

CUT-OUT COMPATIBILITY

16 Years of Cut-Out Compatibility



Old model

Panel cutout dimensions

AGP3000 model
"Drop-in"



Size (mm)	156x123.5 mm
Series	
GP77R Series	GP377R Series
GP2000 Series	GP2300/ GP2301 Series
GP3000 Series	GP-3300 Series

SOFTWARE COMPATIBILITY



POWERED BY:

Screen Editor
GP-Pro EX

HMI Development
Software

ORDERING INFORMATION

ORDER NUMBER	DESCRIPTION
AGP3500-L1-D24-D81C	5.7" Monochrome, 2 Serial, 1 USB, Ethernet, Discrete 6 in 2 Out (Source), 24VDC

OPTIONAL ACCESSORIES

HMI-CAB-ETH	Ethernet Crossover Cable: HMI to PLC Ethernet port or to program HMI
CA3-USBCB-01	USB download cable, PC USB port to AGP USB port
CA3-DFS6-01	Overlay Screen protection sheet (5 sheets/pack)

PLC Cables & Accessories See AGP3000 Connectivity Document

Xycom Automation
Ph: 734-429-4971
Fax: 734-429-1010
<http://www.xycom.com>

Customer Support Hotline:
734-944-0482



© 2006 Xycom Automation, LLC. Specifications may change without notice.
Xycom Automation is a trademark of Xycom Automation. Other brand or product names are the property of their respective owners.