

PRO-FACE OPERATOR INTERFACES

PRODUCT DATASHEET



AGP3400-T1-D24-D81K

AGP3400-T1-D24-D81C

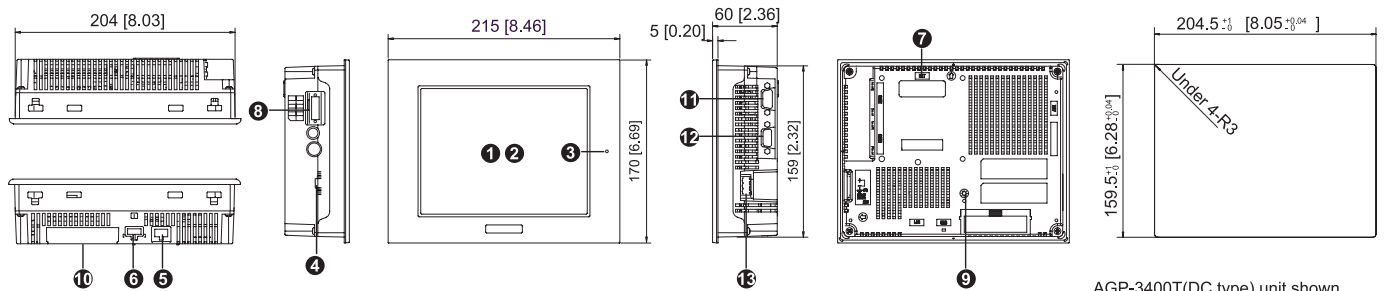


AGP3400T D81K/D81C Integrated HMI Controller

7.5" Integrated Control Operator Interface with Built-In Discrete I/O

- All-in-One HMI and PLC with Built-in 6 discrete inputs and 2 discrete outputs
- 65,536 Colors, Clear, Bright, High-Resolution TFT Display
- 64-bit RISC 266Mhz CPU for Ultra-Fast Screen Refresh and Data Sampling
- No Grid Analog Touch Panel for Improved Visibility and Precise Part Placement
- Supports Up to Four Protocol Drivers Simultaneously
- High Speed Application Transfer, 10 Times Faster than Conventional Operator Interfaces
- 10/100 Base-T Ethernet, USB, (MPI) Serial and CompactFlash™ Communication Interfaces
- Audio Output, Alarm, Buzzer Remote Reset Interfaces

PRODUCT OVERVIEW



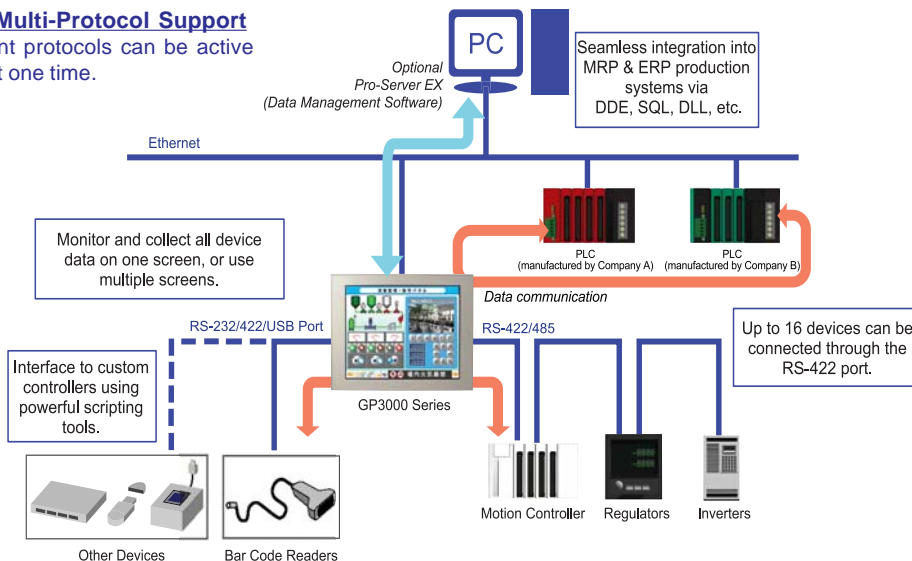
AGP-3400T(DC type) unit shown.

- 1 Display**
- 2 Touch Panel**
- 3 Status LED**
- 4 Discrete I/O Interface**
6 Discrete Inputs, 2 Discrete Outputs Built-in.
- 5 10/100 Base-T Ethernet Interface (LAN)** (RJ45)
- 6 USB Interface (Host)**
Conforms to USB1.1. (TYPE-A conn.) 2 ports for data transfer cable, USB-compatible printer, or barcode reader, etc. The maximum communication distance is 5m.
- 7 Optional Communication Module Interface 2**
- 8 Discrete input/output and Audio Output Interface**
Pluggable connector for External Reset, Alarm Output, Buzzer Output, and sound output.
- 9 CompactFlash Card Access LED**
This lamp will light when CF card is inserted and CF card cover is closed, or while accessing the CF card when the cover is opened.
- 10 CompactFlash Card Access Cover**
The CF Card I/F and Dip Switches are located behind the access door. This cover must be closed when reading and writing to the CF Card.
- 11 Serial Interface (COM1)**
RS-232C/RS-422 serial interface. D-sub 9-pin plug type connector. Communication method is switched via software.
- 12 Serial Interface (COM2)**
RS-422/RS-485 (MPI) 187kbps to 12Mbps serial interface. D-sub 9-pin socket type connector.
- 13 Power Plug Connector**
Power cable is connected to this connector.

COMMUNICATION CAPABILITY

Simultaneous Multi-Protocol Support

Up to four different protocols can be active at one time.



AGP3400T D81K/D81C CONTINUED

INTEGRATED MONITOR CONTROL

ONLINE LOGIC PROGRAM MONITORING FEATURE

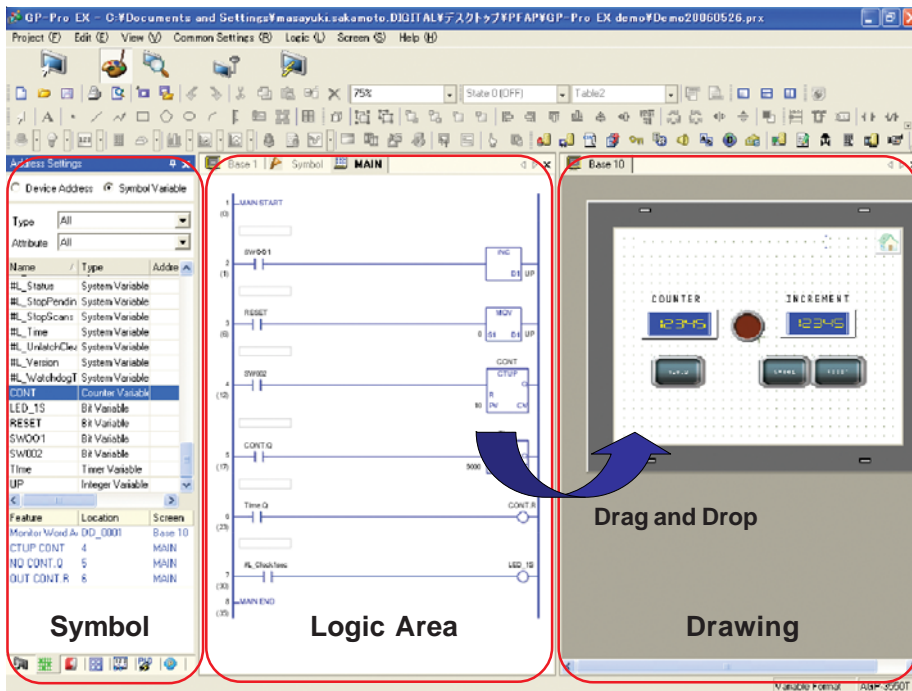


Detect Problems Faster

- View logic Programming on HMI while running. "No need for a laptop!"
- Verify current values of all variables live
- Quickly identify sequential logic faults
- Helps optimize Programming & Processes
- View logic in English or Japanese

POWERFUL LOGIC PROGRAMMING

With GP-Pro EX, you can develop logic programs as well as screen creation. You can also import existing logic programs created with the GP-PRO/PBIII C-Package.



Time Saving Steps

Drag and Drop

Drag contact or coil to quickly create a graphical switch or lamp.

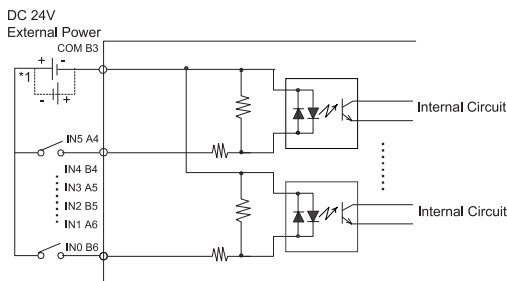
Re-usable sub-routines

Reduce steps for product programming development and maintenance using sub-routines.



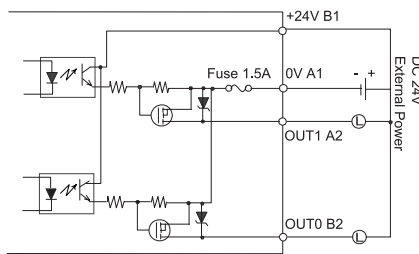
BUILT-IN DISCRETE I/O

6 Discrete Inputs, 2 Discrete Outputs Per Model

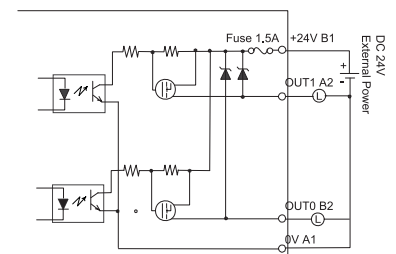


*1 Dotted line shows connection to sink output type.

Discrete Input Connection



Discrete Output Connection (Sink Configuration)



Discrete Output Connection (Source Configuration)

AGP3400T D81K/D81C SPECIFICATIONS

FUNCTIONAL SPECIFICATIONS

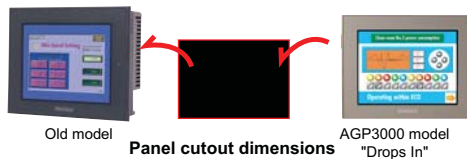
Model	AGP3400-T1-D24-D81K/D81C	
Display	Type	TFT Color LCD
	Colors	65536 colors (no blink) / 16384 colors (3-speed blink)
	Backlight	User replaceable CCFL (Service life: 54,000 hrs. or more at 25°C (77°F) and 24 hrs. operation)
	Resolution	640 x 480 pixels
	Brightness Control	8 levels of adjustment available via touch panel
Memory	Application	8MB FEPRAM
	Data Backup	320KB SRAM
Interfaces	Serial (COM 1) Interface	RS-232C/422/485 configurable, 9 pin plug D-sub, Data Transmission Speed: 2400 to 115.2 Kbps
	Serial (COM 2) Interface	RS-422/485, 9 pin socket D-sub, Data Transmission Speed: 2400 to 115.2 Kbps (MPI Direct 187.5 Kbps)
	Ethernet Interface	Ethernet IEEE802.3, 10BASE-T/100BASE-TX, modular jack connector (RJ-45)
	Communication Module Interface	Interface port for optional communication modules.
	USB Interface	1 port USB1.1 Host I/F, USB TYPE-A connector
	CF Card Interface	1 slot CompactFlash™, TYPE II
	Sound Output	Speaker output 70mW (Rated Load: 8ohm, Frequency: 1kHz)
	Discrete 6 In 2 Out Interface	Connect to an I/O device. 6 Input pts. 24VDC, Rated: 5.7 mA. 2 Outputs 24V DC, Rated: 24VDC @ 200mA/pt.
AUX Input/Output	AUX Discrete Output: Alarm Output, RUN Output, Buzzer Output, Rated: DC24V @ 50mA AUX Discrete Input: Remote Reset Input. Rated: DC24V @ 6mA	

GENERAL SPECIFICATIONS

Electrical	Rated Voltage	24VDC
	Rated Voltage Range	19.2V DC to 28.8V DC
	Power Consumption	28W or less
Environmental	Ambient Operating Temp.	0°C (32°F) to 50°C (122°F)
	Storage Temperature	-20°C (-4°F) to 60°C (140°F)
	Storage Humidity	10%RH to 90%RH (non-condensing, wet bulb temperature: 39°C (102°F) or less)
	Altitude Endurance	800hPa to 1114hPa (2000 meters or lower)
	Vibration & Shock Resistance	IEC61131-2 compliant. 5Hz to 9Hz single amplitude 3.5mm, 9Hz to 150Hz fixed acceleration 9.8m/s ² , X, Y, Z directions for 10 times (100min.)
Structural	Ratings	Equivalent to IP65f, Nema #250 Type 4x/13 (Equivalent to NEMA 12 with the addition of "Oil or Coolant Spraying and Splashing")
	Certifications	CE, CSA, UL Listed CI 1 Div 2 Groups A, B, C, D
	External Dimensions	W215mm [8.46in.] x H170mm [6.69in.] x D60mm [2.36in.]
	Weight	1.8kg (4.0lb) or less

CUTOUT COMPATIBILITY

16 Years of Cut-Out Compatibility



Panel cutout dimensions

Series name	Size	204.5x159.5 mm
GP77R Series		—
GP2000 Series	GP2400/01 Series	
GP3000 Series	GP-3400 Series	

Investment Protection

SOFTWARE COMPATIBILITY



POWERED BY:

Screen Editor
GP-Pro EX

HMI Development Software

(V.1.10 or higher)

ORDERING INFORMATION

ORDER NUMBER	DESCRIPTION
AGP3400-T1-D24-D81K	7.5" TFT, 2 Serial, 1 USB, Ethernet, Discrete 6 In 2 Out (Sink), 24VDC
AGP3400-T1-D24-D81C	7.5" TFT, 2 Serial, 1 USB, Ethernet, Discrete 6 In 2 Out (Source), 24VDC

OPTIONAL ACCESSORIES

HMI-CAB-ETH	Ethernet Crossover Cable: HMI to PLC Ethernet port or to program HMI
CA3-USBCB-01	USB download cable, PC USB port to AGP USB port
PS400-DF00	Overlay Screen Protection Sheets (5 sheets/pack)
PLC Cables & Accessories	See AGP3000 Connectivity Document

Xycom Automation

Ph: 734-429-4971

Fax: 734-429-1010

<http://www.xycom.com>

Customer Support Hotline:

734-944-0482

Pro-face
XYCOM

© 2006 Xycom Automation, LLC. Specifications may change without notice.

Xycom Automation is a trademark of Xycom Automation. Other brand or product names are the property of their respective owners.