

PRO-FACE OPERATOR INTERFACES

PRODUCT DATA SHEET



AGP3300-S1-D24-D81K
AGP3300-S1-D24-D81C

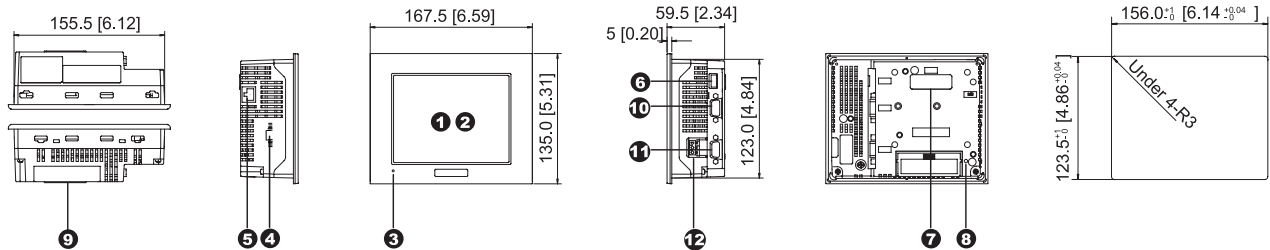


AGP3300S D81K/D81C Integrated HMI Controller

5.7" Integrated Control Operator Interface with Built-In Discrete I/O

- All-in-One HMI and PLC with Built-in 6 discrete inputs and 2 discrete outputs
- 4096 Colors TFT, Clear, Bright, High-Resolution STN Display
- 64-bit RISC 133Mhz CPU for Ultra-Fast Screen Refresh and Data Sampling
- No Grid Analog Touch Panel for Improved Visibility and Precise Part Placement
- Supports Up to Two Protocol Drivers Simultaneously
- High Speed Application Transfer, 10 Times Faster than Conventional Operator Interfaces
- 10/100 Base-T Ethernet, USB, Serial (MPI) and CompactFlash™ Communication Interfaces
- High-Definition Part Images and Multi-Language Support

PRODUCT OVERVIEW



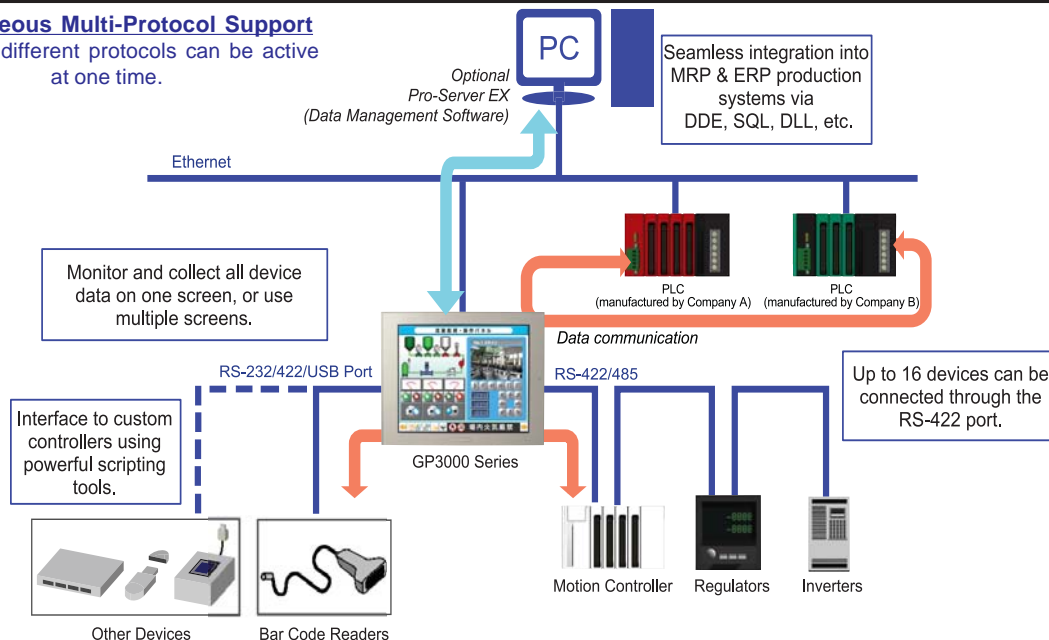
AGP-3300T(AC type) unit shown.

- | | | |
|---|---|--|
| <ul style="list-style-type: none"> ➊ Display ➋ Touch Panel ➌ Status LED ➍ Discrete I/O Interface
6 Discrete Inputs, 2 Discrete Outputs Built-in. ➎ 10/100 Base-T Ethernet Interface (LAN) (RJ45) | <ul style="list-style-type: none"> ➏ USB 1.1 Type A Interface (Host)
One Port for download, bar-code, printer or other USB device ➐ Optional Communication Module Interface 2 ➑ CF Card Access LED ➒ CompactFlash™ Card Access Cover (CF cards up to 512MB available) | <ul style="list-style-type: none"> ➓ Serial Interface (COM1)
RS-232C/RS-422 serial interface. D-sub 9-pin plug type connector. Communication method is switched via software. ➑ Serial Interface (COM2)
RS-422/RS-485 MPI (187kbps) serial interface. D-sub 9-pin socket type connector. ➒ Power Plug Connector |
|---|---|--|

COMMUNICATION CAPABILITY

Simultaneous Multi-Protocol Support

Up to two different protocols can be active at one time.



AGP3300S D81K/D81C CONTINUED

INTEGRATED MONITOR CONTROL

ONLINE LOGIC PROGRAM MONITORING FEATURE

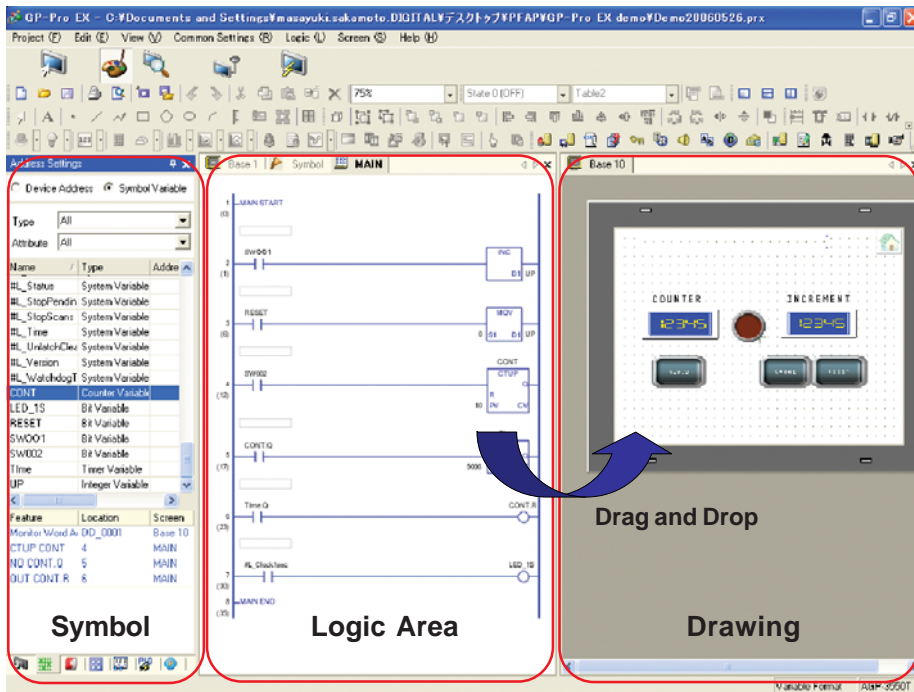


Detect Problems Faster

- View logic Programming on HMI while running. "No need for a laptop!"
- Verify current values of all variables live
- Quickly identify sequential logic faults
- Helps optimize Programming & Processes
- View logic in English or Japanese

POWERFUL LOGIC PROGRAMMING

With GP-Pro EX, you can develop logic programs as well as screen creation. You can also import existing logic programs created with the GP-PRO/PBIII C-Package.



Time Saving Steps

Drag and Drop

Drag contact or coil to quickly create a graphical switch or lamp.

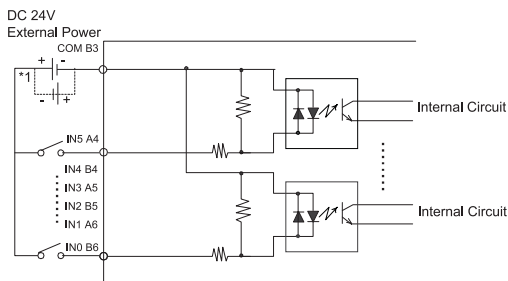
Re-usable sub-routines

Reduce steps for product programming development and maintenance using sub-routines.

Screen Editor
GP-Pro EX

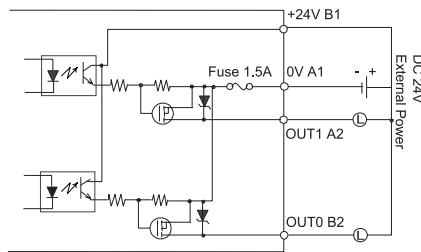
BUILT-IN DISCRETE I/O

6 Discrete Inputs, 2 Discrete Outputs Per Model

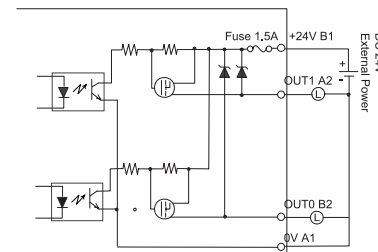


*1 Dotted line shows connection to sink output type.

Discrete Input Connection



Discrete Output Connection (Sink Configuration)



Discrete Output Connection (Source Configuration)

AGP3300S D81K/D81C SPECIFICATIONS

FUNCTIONAL SPECIFICATIONS

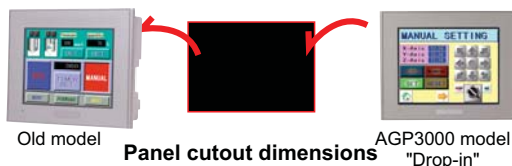
Model	AGP3300-S1-D24-D81K/D81C	
Display	Type	STN Color LCD
	Colors	4096 colors (3-speed blink)
	Backlight	CCFL Service life: 50,000 hrs. or more at 25°C (77°F) and 24 hrs. operation
	Resolution	320 x 240 pixels
	Brightness Control	8 levels of adjustment available via touch panel
	Touch Panel	Resistive film analog 1024 x 1024 resolution
Memory	Application	6 MB FEPRAM
	Data Backup	320KB SRAM
Interfaces	Serial (COM 1) Interface	RS-232C/422/485 configurable, 9 pin plug D-sub, Data Transmission Speed: 2400 to 115.2 Kbps
	Serial (COM 2) Interface	RS-422/485, 9 pin socket D-sub, Data Transmission Speed: 2400 to 115.2 Kbps (MPI Direct 187.5 Kbps)
	Ethernet Interface	Ethernet IEEE802.3, 10BASE-T/100BASE-TX, modular jack connector (RJ-45)
	Communication Module Interface	Interface port for optional communication modules.
	USB Interface	1 port USB1.1 Host I/F, USB TYPE-A connector
	Discrete 6 In 2 Out Interface	Connect to an I/O device. 6 Input pts 24VDC, Rated: 5.7 mA. 2 Outputs 24V DC, Rated: 24VDC @ 200mA/pt.
CF Card Interface	1 slot CompactFlash™, TYPE II	

GENERAL SPECIFICATIONS

Electrical	Rated Voltage	24VDC
	Rated Voltage Range	19.2V DC to 28.8V DC
	Power Consumption	26W or less
Environmental	Ambient Operating Temp.	0°C (32°F) to 50°C (122°F)
	Storage Temperature	-20°C (-4°F) to 60°C (140°F)
	Storage Humidity	10%RH to 90%RH (non-condensing, wet bulb temperature: 39°C (102°F) or less)
	Altitude Operation	800hPa to 1114hPa (2000 meters or lower)
Structural	Vibration & Shock Resistance	IEC61131-2 compliant. 5Hz to 9Hz single amplitude 3.5mm, 9Hz to 150Hz fixed acceleration 9.8m/s ² , X,Y, Z directions for 10 times (80min.)
	Ratings	Equivalent to IP65f, Nema #250 Type 4x/13 (Equivalent to NEMA 12 with the addition of "Oil or Coolant Spraying and Splashing")
	Certifications	CE, CSA, UL Listed CI 1 Div 2
	External Dimensions	W167.4mm[6.59in.] x H135mm [5.31in.] x D59.5mm [2.34in.]
Weight	1.0kg (2.2lb) or less	

CUT-OUT COMPATIBILITY

16 Years of Cut-Out Compatibility



Panel cutout dimensions

Series	Size (mm)
GP77R Series	156x123.5 mm
GP2000 Series	GP2300/ GP2301 Series
GP3000 Series	GP-3300 Series

Investment Protection

SOFTWARE COMPATIBILITY



POWERED BY:

Screen Editor
GP-Pro EX

HMI Development Software

(V.1.10 or higher)

ORDERING INFORMATION

ORDER NUMBER

AGP3300-S1-D24-D81K
AGP3300-S1-D24-D81C

DESCRIPTION

5.7" STN, 2 Serial, 1 USB, Ethernet, Discrete 6 in 2 Out (Sink), 24V
5.7" STN, 2 Serial, 1 USB, Ethernet, Discrete 6 in 2 Out (Source), 24V

OPTIONAL ACCESSORIES

HMI-CAB-ETH Ethernet Crossover Cable: HMI to PLC Ethernet port or to program HMI
CA3-USBCB-01 USB download cable, PC USB port to AGP USB port
CA3-DFS6-01 Overlay Screen protection sheets (5 sheets/pack)
PLC Cables & Accessories See AGP3000 Connectivity Document

Xycom Automation
Ph: 734-429-4971
Fax: 734-429-1010
<http://www.xycom.com>

Customer Support Hotline:
734-944-0482



© 2006 Xycom Automation, LLC. Specifications may change without notice.
Xycom Automation is a trademark of Xycom Automation. Other brand or product names are the property of their respective owners.