

PRO-FACE OPERATOR INTERFACES

product datasheet



ST401-AG41-12V-XY1



ST401 12VDC, RS-232 Serial

3.8" Amber Low Cost Graphic Touch Screen

- Fast and Powerful 100Mhz RISC Processor
- Six function buttons configurable per screen
- HMI designed for solar-powered remote flow monitoring applications
- 12V DC is ideal for in-vehicle heavy machinery display systems
- Bar code reader support for parts tracking and inventory control
- Extensive Multi-language character support
- Zero maintenance amber LED backlight ideal for applications needing high contrast and visibility
- UL Listed, Class 1, Division 2 Hazardous Location Certifications

FEATURES

- 3.8 Inch Touch Screen
- LED Backlit Amber LCD
- 320 x 240 QVGA Resolution
- Graphic Image Import
- Java-Based Scripting Support
- RS-232 Serial Com Port
- NEMA 4x/12
- 12V DC Power
- Multi-language

INFORMATION



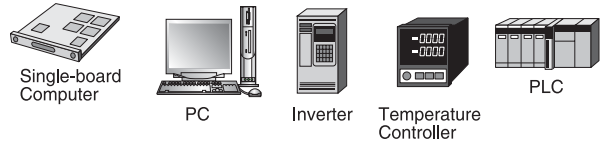
Powered by Pro-Designer V4.2.10 HMI Development software

- Easy-to-use multi-platform graphics editor for drawing objects, animation, creating pre-configured operator objects, etc.
- Recipes Trending, Alarm/Event Management, Security, Scheduling, Pop-up keypads, etc.
- Animation and Java-based scripting
- Graphic file import: BMP, JPG, EMF, PNG

COMMUNICATION

Versatile interfaces support flexible and expanding control system needs:

- Connect to various controllers via RS-232



- Also supports serial devices such as single or two-dimensional bar code readers



CONNECTIVITY

RS-232C Serial Interface

Pin Connection	Pin No.	Signal	Signal Name	Direction
	1	NC	No connection	-
	2	NC	No connection	-
	3	LINE(+)	Line (+)	In/Output
	4	RTS	Request Send	Output
	5	SG	Ground	-
	6	5V	5V External Output ^{*2}	Output
	7	NC	No connection	-
	8	LINE(-)	Line (-)	In/Output
	9	NC	No connection	-

*1 The connector of the ST side is socket type.

*2 When providing power via the Seimens Corporation Profibus connector, power cannot be connected to the Device/PLC.



Partial List of Controllers Supported:

GE Fanuc	Mitsubishi	Rockwell
Schneider	Yokogawa	Siemens
Fuji Electric	Koyo	Matsushita
Modicon	Omron	Toyoda

... and MORE

ST401 12V SPECIFICATIONS

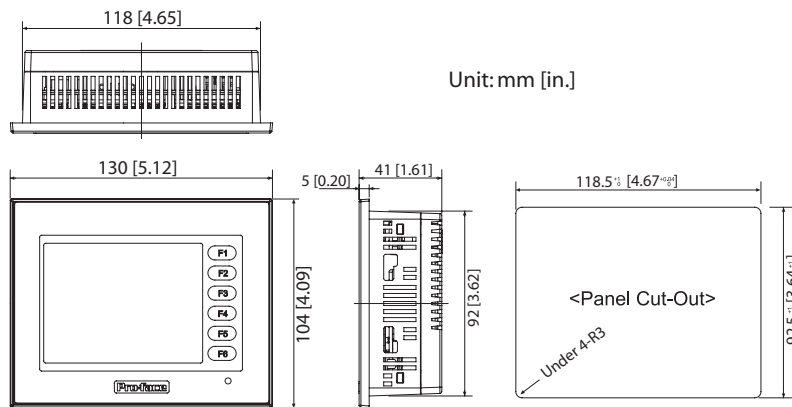
FUNCTIONAL SPECIFICATIONS

Display Type	Amber Monochrome LCD
Display Colors	Monochrome; up to 8 levels of gray
Backlight	LED backlight maintenance free
Display Resolution	320 x 240 pixels
Effective Display Area (mm)	W76.7mm [3.02in.] x H57.5mm [2.26in.]
Brightness Control	2 levels of adjustment available via touch panel
Contrast Control	8 levels of adjustment available via touch panel
Character Sizes	8x8, 8x16, 16x16, 32x32 dot fonts
Font Sizes	Width can be expanded 1 to 8 times. Height can be expanded 1/2 and 1 to 8 times
Memory - Application	8 MB FLASH EPROM
Memory - Data Backup	16MB SRAM - uses a lithium battery
Serial (COM 1) Interface	RS-232C, 9-pin D-sub, Data Transmission Speed: 2400 to 115.2 kbps
Tool Connector Port	8-pin mini Din, Asynchronous TTL Level non-procedural command interface for program download, barcode reader interface

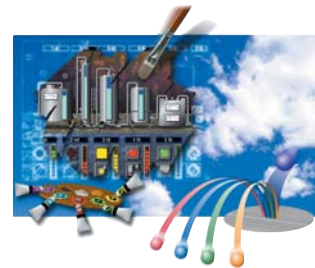
GENERAL SPECIFICATIONS

Electrical	Input Voltage	12VDC
	Rated Voltage Range	9.6VDC to 14.4VDC
	Power Consumption	7W or less
Environmental	Ambient Operating Temp.	0°C to 50°C (Cabinet interior and panel face)
	Storage Temperature	-20°C to 60°C
	Operating Humidity	10%RH to 90%RH (non-condensing, drybulb temperature: 39°C or less)
	Storage Humidity	10%RH to 90%RH (non-condensing, drybulb temperature: 39°C or less)
Structural	Vibration Resistance	IEC61131-2 (JIS B 3501) compliant. When vibration is NOT continuous: 10Hz to 57Hz 0.075mm, 57Hz to 150Hz 9.8m/s ² . When vibration is continuous: 10Hz to 57Hz 0.035mm, 57Hz to 150Hz 4.9m/s ² X,Y, Z direction for 10 times 80 min.)
	Ratings	NEMA TYPE#250 Type 4 x/12 Equivalent to IP65
	Certifications	UL/cUL Listed, UL508, UL1604 CL 1 Div 2, CE EN55011, EN61000-6-2
	External Dimensions	W130mm[5.12in.] x H104mm [4.09in.] x D41mm [1.61in.]
	Weight	0.4kg (0.88lb) or less

EXTERNAL DIMENSIONS



SOFTWARE COMPATIBILITY



Powered by
Pro-Designer V4.2.10 HMI
 Development software

ORDERING INFORMATION

ORDER NUMBER

ST401-AG41-12V-XY1

OPTIONAL ACCESSORIES

GPW-CB02

GPW-CB03

CA3-CBL232/5M-01

HMI-CAB-ST001

ST400-DF01

PLC Cables

DESCRIPTION

3.8" Amber, Pro-Designer Only, 1 RS-232 Port, 12VDC

Programming Cable, PC RS-232, 9 pin D-Sub application download cable

Programming Cable, PC USB, application download cable

RS-232C cable, 5 meter length, connect ST401 unit to PLC via 25 pin, D-sub plug

Generic serial communication cable, ST40x to open end wires, 3 meters

Overlay Screen Protection Sheet (qty 5)

Wide variety of PLC cables available

Xycom Automation, Inc.
 a Pro-face America Company

734-429-4971

Fax: 734-429-1010

http://www.xycom.com

Customer Support Hotline:
 734-944-0482



© 2006 Xycom Automation, LLC. Is a wholly owned subsidiary of Pro-face America, Inc. Specifications may change without notice. Xycom Automation is a trademark of Xycom Automation. Other brand or product names are the property of their respective owners.