

9487 Flat Panel Industrial PCs

DS-099330-001(P)



The 9487 color NEMA 4/4X/12 Industrial Flat Panel Computers offer a compact, modular package, ideal for the factory floor and other harsh environments. The modular slide-out computer design makes the 9487 easy to maintain. A simple disconnect setup allows quick access to all system components for installation and maintenance. With its powerful features and rugged packaging, the 9487 brings maximum serviceability and reliability to the factory floor.

Touchscreen

A Windows®-compatible resistive membrane touchscreen can be factory installed. This industrial touchscreen lets you select on-screen objects by pressing directly on the touchscreen. Drivers for MS-DOS® and Windows® 95 and Windows NT® are shipped with touchscreen-equipped units.

Industrial Mouse

An optional Windows® 95 and Windows NT®-compatible sealed industrial mouse is available installed in the front floppy door.

Windows® 95 or Windows NT®

All 9487 systems may be ordered with Windows 95 or Windows NT. Unless otherwise specified, all 9487s are shipped preloaded with MS-DOS.

Class I, Division II-Approval

9487 systems may be ordered configured to meet Class I and Class II, Division 2 hazardous location specifications.

FEATURES

- Preloaded with MS-DOS, Windows® 95, or Windows NT®
- 10.4" VGA flat panel display (640 × 480) (TFT LCD active matrix)
- Intel® Pentium® 233 MHz processors with MMX technology
- 64 MB of DRAM
- PCI video and PCI EIDE controller
- Optional touchscreen
- 5.62 inch (143 mm) mounting depth
- Four-slot ISA full-length passive backplane (three available slots)
- 10 GB Hard Drive
- Front or rear access 1.44 MB floppy drive
- NEMA 4/4X/12 front panel
- 19-inch EIA rack or panel mounting
- Programmable keypad keycodes
- Relegendable keypads with 20 function keys and 32 data entry keys
- Front panel status LEDs and diagnostics
- Optional approval for hazardous locations Class I, Division 2, Groups A, B, C, and D; Class II, Division 2, Groups F and G, Temperature Code T4
- Optional 24 VDC power supply (no CE regulatory compliance)

24 Volt DC Power Supply

9487 systems may be ordered configured to accept 24 Volt DC power.



HARDWARE DESCRIPTION

The system comes with a 10.4" TFT LCD flat panel display protected by an impact-resistant shield. The use of flat panel technology allows for a mounting depth of only 5.62 inches (143 mm).

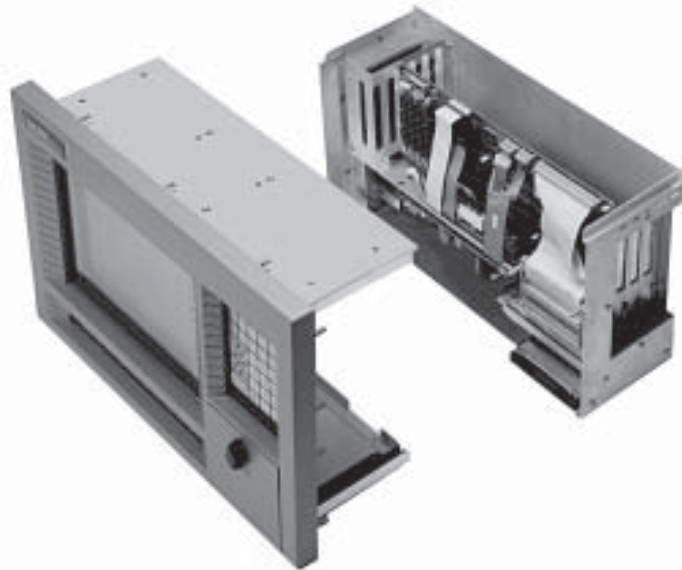
9487 systems are available with Pentium processor technology. These highly integrated, single-board computers support up to 64 MB of DRAM and provide an integrated floppy drive controller. Each also offers two RS-232C serial ports, and a parallel port, PCI local bus video and a PCI EIDE controller.

The NEMA 4/4X/12-sealed front panel features a floppy drive access door (the floppy drive can be changed to back access); a keyboard port; six external status LEDs: Fault, Maint, Power, Disk, COM, and Run-time Alarm Detection and Recording (RADAR); 32 data entry keys; and 20 function keys. Both relegendable keypads offer user-programmable keycodes.

Other standard features include a four-slot (3 available) 16-bit full-length ISA passive backplane, 110-watt power supply (derated to 80 watts), 3.5-inch 1.44 MB floppy disk drive, second keyboard port, and high-capacity hard drive.

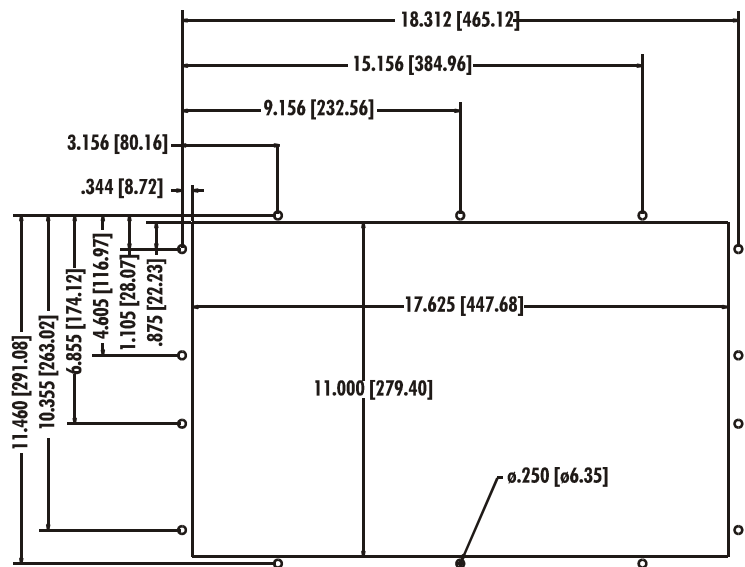
The modularity of the system makes it easy to maintain and reconfigure. Comprised of three logical modules (the display, backplane, and CPU), it is easy to update. A passive back-plane makes it simple to plug in or remove PC cards, so it is easy to install new components to keep up with processor, memory, and I/O technology. Front and back modules connect internally, and an I/O area provides side access to parallel, speaker jack, COM1, COM2, and keyboard ports. No cables protrude from the back of the unit.

The built-in Programmable Keyboard Interface Module (PKIM) coordinates activity from the keypads and keyboards. It can also be used to reconfigure front panel keypad keycodes.



PRODUCT AND MOUNTING DIMENSIONS

9487 Mounting



Unit Dimensions

Height	12.2" (310 mm)
Width	19" (483 mm)
Mounting Depth	5.62" (143 mm)
Weight	27 lbs (12.2 kg)

PRODUCT SPECIFICATIONS AND RATINGS

Environmental

	Operating	Nonoperating
Thermal	0°C to 50°C (32° TO 122°F)	-20°C to 60°C (-4° to 140°F)
Humidity	20% to 80% RH, noncondensing	20% to 80% RH, noncondensing
Shock ^a	15g peak acceleration, 11 msec duration	30g peak acceleration, 11 msec duration
Vibration 5-2000 Hz	0.006" peak to peak displacement 1.0g maximum acceleration	0,015" peak to peak displacement 2.5g maximum acceleration
Altitude	Sea level to 10,000 ft. (3,048 m)	Sea level to 40,000 ft. (12,192 m)

^a These values are with solid state hard drives and not rotating media drives

Electrical

Power supply	110 Watt power (80 W derated)
AC power^b	90 - 250V AC, 50-60 Hz, 2.1A (maximum)
DC Power^c (option)	20 - 25V DC, 10A maximum
Available power^d	+5V@2.6A +12V@3.2A -5V@0.45A -12V@0.45A

^b2.1A maximum

^c10A maximum

^dTotal not to exceed 35 Watts

Front Panel:

- NEMA 4/4X/12

Regulatory Compliance

CE

- EN 60950
- EN 55022, Class A
- EN 50082-2

FCC

- 47 CFR, Part 15, Class A

Safety Agency Approvals^e:

- UL 508
- UL 1604 (on select models)

- CSA-C22.2, #14
- CSA-C22.2, #213 (on select models)

^eClass I and Class II, Division 2 hazardous location approval available on optionally-equipped models

ORDERING INFORMATION

To create an order number, follow the conventions defined by the example order numbers and product configurations. The 9487 carries a one-year warranty on parts and labor. Extended warranties are available.

Standard Configurations

Order Number	Description
9487-723364-T-NT	9487 series flat panel industrial PC with 233 MHz Pentium processor, 64 MB of DRAM, a touchscreen, 10 GB hard drive, preloaded with Windows NT operating system

9487 Product Configurations

9487-723364-

Operator Input

blank No touchscreen
-T Touchscreen

Power Supply

blank AC power supply
-HAZ AC power supply and
Class I Division II approval

Mouse

blank No sealed industrial mouse
-M Sealed industrial mouse^a

Internal Hard Drive

blank 10 GB minimum hard disk

Operating System

blank MS-DOS
-95 Windows 95
-NT Windows NT

^aNo agency approvals. Must order product modification.

Xycom Automation, Inc.
734-429-4971 • Fax: 734-429-1010
<http://www.xycom.com>



© 2003 Xycom Automation, Inc. Is a wholly owned subsidiary of Pro-face America, Inc. Specifications may change without notice. Xycom Automation is a trademark of Xycom Automation. Other brand or product names are the property of their respective owners.